



Poornasree® EQUIPMENTS

Manufacturer of Milk Testing Equipments



LactoSure ECO-S VER 3.0



LactoSure ECO VER 3.0



LactoSure ECO-V



Vibro
ULTRASONIC STIRRER



LactoSure ECO D-V4



LactoSure ECO SV-V4



LactoSure DPS-T



LactoSure ECO-CP



ORIGINAL EQUIPMENT
MANUFACTURER OF
ALL PRODUCTS UNDER

LactoSure® BRAND



Poornasree Equipments (H.O)

20/253-C, Mannoor Road, Maradu,
Ernakulam, Kerala - 682 304, India

Customer care: +91 9400961291

Sales Enquires: +91 7909220003, +91 7510140111



For service Enquiry Contact: +91 9544757711

Our service Point located at: Cochin (H.O), Vijayawada (AP),
Udhgir (Maharashtra), Bhopal (MP), Pratapgarh (UP),
Bulandshar (UP)

✉ marketing@poornasree.com

🌐 www.poornasree.com

THE NEW ADVANCED

LactoSure[®] Eco

3RD
GENERATION

THE FASTEST ULTRASONIC MILK ANALYZER

RESULT IN
25SEC



*INTERNAL MEMORY UPTO
1000 TEST FOR FIELD COLLECTION



*POWERED WITH NEW ADVANCED
32-BIT DUAL CORE MICROCONTROLLER



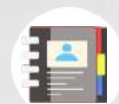
*LIGHT WEIGHT & COMPACT BODY
WITH SPLASH &
SHOCK PROOF DESIGN



*FIELD COLLECTION DATA
DOWNLOAD FACILITY
TO COMPUTER



*USB CONNECTIVITY FOR
KEYBOARD/FLASH
DRIVE/SERIAL DATA



*OPTION TO STORE
CUSTOMER ID & QUANTITY



*SUPER SILENT
MOTOR TECHNOLOGY



*REMOTE OPERATION
THROUGH MOBILE



*ANDROID APP
SUPPORT



BLUETOOTH



WIFI

OPTIONAL CONNECTIVITY



*CLOUD DATA
API SYNC



*RATE CHART SUPPORT

Measuring Parameters: 1. Fat, 2. SNF, 3. CLR, 4. Protein, 5. Lactose, 6. Added Salt, 7. Added Water, 8. Temperature

Accuracy		Measuring Range	
Fat	: $\pm 0.1\%$	Fat	: 0.5% to 12%, 12% to 15%
SNF	: $\pm 0.15\%$	SNF	: 6% to 15%
CLR	: ± 1	CLR	: 15 to 40
Water	: $\pm 5\%$	Water	: 0% to 99%
Temperature	: $\pm 1^\circ\text{C}$	Temperature	: 1°C to 40°C

- ✧ LactoSure ECO V3 – Ultrasonic Analyzer
- ✧ Easy correction feature available
- ✧ Excellent repeatability for all parameters
- ✧ High accuracy even for high fat milk
- ✧ Option for ID and Weight entry
- ✧ Rate chart can be created manually and through USB



SCAN TO
CONNECT US

Poornasree[®]
EQUIPMENTS

Manufacturer of Milk Testing Equipments

MADE
IN INDIA
PROUD TO BE
AN INDIAN

www.poornasree.com

THE NEW ADVANCED

LactoSure[®] Eco-S

3RD
GENERATION

THE FASTEST SOLAR POWERED ULTRASONIC MILK ANALYZER

RESULT IN
25SEC

8 HOURS
BATTERY BACKUP



*INTERNAL MEMORY UPTO
1000 TEST FOR FIELD COLLECTION



*POWERED WITH NEW ADVANCED
32-BIT DUAL CORE MICROCONTROLLER



*OPTION TO STORE
CUSTOMER ID & QUANTITY



*FIELD COLLECTION DATA
DOWNLOAD FACILITY
TO COMPUTER



*SUPER SILENT
MOTOR TECHNOLOGY



*USB CONNECTIVITY FOR
KEYBOARD/FLASH
DRIVE/SERIAL DATA



*LIGHT WEIGHT & COMPACT BODY
WITH SPLASH &
SHOCK PROOF DESIGN



*REMOTE OPERATION
THROUGH MOBILE



*ANDROID APP
SUPPORT



BLUETOOTH



WIFI

OPTIONAL CONNECTIVITY



*CLOUD DATA
API SYNC



*RATE CHART SUPPORT



WITH 40W SOLAR PANEL

Measuring Parameters: 1. Fat, 2. SNF, 3. CLR, 4. Protein, 5. Lactose, 6. Added Salt, 7. Added Water, 8. Temperature

Accuracy		Measuring Range	
Fat	: $\pm 0.1\%$	Fat	: 0.5% to 12%, 12% to 15%
SNF	: $\pm 0.15\%$	SNF	: 6% to 15%
CLR	: ± 1	CLR	: 15 to 40
Water	: $\pm 5\%$	Water	: 0% to 99%
Temperature	: $\pm 1^\circ\text{C}$	Temperature	: 1°C to 40°C

- * LactoSure ECO S – Ultrasonic Analyzer + 8hour Battery + 40w Solar Panel
- * Easy correction feature available
- * Excellent repeatability for all parameters
- * High accuracy even for high fat milk
- * Option for ID and Weight entry
- * Rate chart can be created manually and through USB



SCAN TO
CONNECT US

Poornasree[®]
EQUIPMENTS

Manufacturer of Milk Testing Equipments

MADE
IN INDIA
PROUD TO BE
AN INDIAN

www.poornasree.com

THE NEW ADVANCED

LactoSure[®] ECO D-V4

THE FASTEST SOLAR POWERED ULTRASONIC MILK ANALYZER
WITH STIRRER & DPU

RESULT IN
25SEC



6 HOURS
BATTERY BACKUP

*approximate time



KEY BOARD
Connectivity



W-SCALE
Connectivity



THERMAL
Print out



PEN DRIVE
Data Log



RF-ID
Identification



SOLAR
Charging



COMPUTER
Connectivity



FTP / CLOUD
Connectivity



LiFePo4
Battery



8GB INTERNAL
Memory



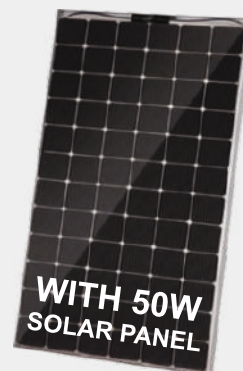
ULTRASONIC
Stirrer



EX-DISPLAY
Connectivity



***POWERED WITH NEW ADVANCED
32-BIT DUAL CORE MICROCONTROLLER**



**WITH 50W
SOLAR PANEL**



***LIGHT WEIGHT & COMPACT BODY
WITH SPLASH &
SHOCK PROOF DESIGN**



***REMOTE OPERATION
THROUGH MOBILE**



***ANDROID APP
SUPPORT**



BLUETOOTH



WIFI

OPTIONAL CONNECTIVITY



***CLOUD DATA
API SYNC**



***SUPER SILENT
MOTOR TECHNOLOGY**

Measuring Parameters: 1. Fat, 2. SNF, 3. CLR, 4. Protein, 5. Lactose, 6. Added Salt, 7. Added Water, 8. Temperature

Accuracy		Measuring Range	
Fat	: $\pm 0.1\%$	Fat	: 0.5% to 12%, 12% to 15%
SNF	: $\pm 0.15\%$	SNF	: 6% to 15%
CLR	: ± 1	CLR	: 15 to 40
Water	: $\pm 5\%$	Water	: 0% to 99%
Temperature	: $\pm 1^\circ\text{C}$	Temperature	: 1°C to 40°C

- LactoSure ECO D – Ultrasonic Analyzer + Stirrer + DPU + Thermal Printer + 6hour battery + 50w Solar Panel + Keyboard
- Easy correction feature available
- Excellent repeatability for all parameters
- High accuracy even for high fat milk
- Reports available: Collection report, Customer report, Sale report, Bill Summary
- ABS & SS body option available



**SCAN TO
CONNECT US**

Poornasree[®]
EQUIPMENTS

Manufacturer of Milk Testing Equipments

MADE
IN INDIA
PROUD TO BE
AN INDIAN

www.poornasree.com

THE NEW ADVANCED

LactoSure[®] ECO SV-V4

THE FASTEST SOLAR POWERED ULTRASONIC MILK ANALYZER WITH STIRRER

RESULT IN
25SEC



6 HOURS
BATTERY BACKUP

*Approximate time



*LIGHT WEIGHT & COMPACT BODY
WITH SPLASH &
SHOCK PROOF DESIGN



*OPTION TO STORE
CUSTOMER ID & QUANTITY



*FIELD COLLECTION DATA
DOWNLOAD FACILITY
TO COMPUTER



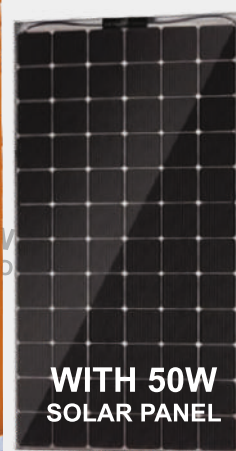
*INTERNAL MEMORY UPTO
1000 TEST FOR FIELD COLLECTION



*SUPER SILENT
MOTOR TECHNOLOGY



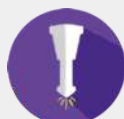
*POWERED WITH NEW ADVANCED
32-BIT DUAL CORE MICROCONTROLLER



WITH 50W
SOLAR PANEL



*RATE CHART SUPPORT



ULTRASONIC
Stirrer



USB
Connectivity



LiFePo4
Battery



COMPUTER
Connectivity



SOLAR
Charging



BLUETOOTH



WIFI



PRINTER

OPTIONAL CONNECTIVITY

Measuring Parameters: 1. Fat, 2. SNF, 3. CLR, 4. Protein, 5. Lactose, 6. Added Salt, 7. Added Water, 8. Temperature

Accuracy		Measuring Range	
Fat	: $\pm 0.1\%$	Fat	: 0.5% to 12%, 12% to 15%
SNF	: $\pm 0.15\%$	SNF	: 6% to 15%
CLR	: ± 1	CLR	: 15 to 40
Water	: $\pm 5\%$	Water	: 0% to 99%
Temperature	: $\pm 1^\circ\text{C}$	Temperature	: 1°C to 40°C

- LactoSure ECO SV – Analyzer + Stirrer + Battery + Solar Panel
- ABS & SS body option available
- Easy correction feature available
- Excellent repeatability for all parameters
- High accuracy even for high fat milk
- Option for ID and Weight entry
- Rate chart can be created manually and through USB



SCAN TO
CONNECT US

Poornasree[®]
EQUIPMENTS

Manufacturer of Milk Testing Equipments

MADE
IN INDIA
PROUD TO BE
AN INDIAN

www.poornasree.com

THE NEW ADVANCED

LactoSure[®] ECO-V

THE FASTEST ULTRASONIC MILK ANALYZER WITH STIRRER

RESULT IN
25SEC



*OPTION TO STORE
CUSTOMER ID & QUANTITY



*FIELD COLLECTION DATA
DOWNLOAD FACILITY
TO COMPUTER



*INTERNAL MEMORY UPTO
1000 TEST FOR FIELD COLLECTION



*SUPER SILENT
MOTOR TECHNOLOGY



*POWERED WITH NEW ADVANCED
32-BIT DUAL CORE MICROCONTROLLER



*RATE CHART SUPPORT



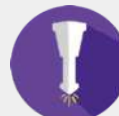
*LIGHT WEIGHT & COMPACT BODY
WITH SPLASH &
SHOCK PROOF DESIGN



USB
Connectivity



COMPUTER
Connectivity



ULTRASONIC
Stirrer



BLUETOOTH



WIFI



PRINTER

OPTIONAL CONNECTIVITY

Measuring Parameters: 1. Fat, 2. SNF, 3. CLR, 4. Protein, 5. Lactose, 6. Added Salt, 7. Added Water, 8. Temperature

Accuracy		Measuring Range	
Fat	: $\pm 0.1\%$	Fat	: 0.5% to 12%, 12% to 15%
SNF	: $\pm 0.15\%$	SNF	: 6% to 15%
CLR	: ± 1	CLR	: 15 to 40
Water	: $\pm 5\%$	Water	: 0% to 99%
Temperature	: $\pm 1^\circ\text{C}$	Temperature	: 1°C to 40°C

- ✧ LactoSure ECO V – Analyzer + Stirrer
- ✧ Easy correction feature available
- ✧ Excellent repeatability for all parameters
- ✧ High accuracy even for high fat milk
- ✧ Option for ID and Weight entry
- ✧ Rate chart can be created manually and through USB



SCAN TO
CONNECT US

Poornasree[®]
EQUIPMENTS

Manufacturer of Milk Testing Equipments

MADE
IN INDIA
PROUD TO BE
AN INDIAN

www.poornasree.com

THE NEW ADVANCED

LactoSure[®] Eco-SV
CONNECT⁺

THE FASTEST SOLAR POWERED ULTRASONIC MILK ANALYZER WITH
STIRRER & ADVANCED CONNECTIVITY FEATURES

RESULT IN
25SEC



6 HOURS
BATTERY BACKUP

*approximate time



KEY BOARD
Connectivity



W-SCALE
Connectivity



THERMAL
Print out



PEN DRIVE
Data Log



EX-DISPLAY
Connectivity



SOLAR
Charging



WITH 50W
SOLAR PANEL

Extended **AMCU**
S



WIFI
CONNECTIVITY



4G 4G NETWORK
CONNECTIVITY



BLUETOOTH
CONNECTIVITY



OTP SECURITY
FOR MACHINE



SMS ALERT
FOR RESULT



USB
CONNECTIVITY



50W SOLAR
PANEL POWERED



INBUILT LIPO4
BATTERY



INBUILT THERMAL
PRINTER



INBUILT STIRRER
MODELS

Measuring Parameters: 1. Fat, 2. SNF, 3. CLR, 4. Protein, 5. Lactose,
6. Added Salt, 7. Added Water, 8. Temperature

Accuracy		Measuring Range	
Fat	: $\pm 0.1\%$	Fat	: 0.5% to 12%, 12% to 15%
SNF	: $\pm 0.15\%$	SNF	: 6% to 15%
CLR	: ± 1	CLR	: 15 to 40
Water	: $\pm 5\%$	Water	: 0% to 99%
Temperature	: $\pm 1^\circ\text{C}$	Temperature	: 1°C to 40°C

- Analyzer+Wifi/4G+Printer+stirrer+Battery+Solar
- ABS & SS body option available
- Easy correction feature available
- Excellent repeatability for all parameters
- High accuracy even for high fat milk
- Option for ID and Weight entry
- Rate chart can be created manually and through USB



SCAN TO
CONNECT US

Poornasree[®]
EQUIPMENTS

Manufacturer of Milk Testing Equipments

MADE
IN INDIA
PROUD TO BE
AN INDIAN

www.poornasree.com

THE NEW ADVANCED

LactoSure[®] Eco-V CONNECT⁺

THE FASTEST ULTRASONIC MILK ANALYZER WITH
STIRRER & ADVANCED CONNECTIVITY FEATURES

RESULT IN
25SEC



KEY BOARD
Connectivity



W-SCALE
Connectivity



THERMAL
Print out



PEN DRIVE
Data Log



EX-DISPLAY
Connectivity



ABS
ABS PLASTIC
Body



Extended **AMCU**
S



WIFI
CONNECTIVITY



4G
4G NETWORK
CONNECTIVITY



BLUETOOTH
CONNECTIVITY



OTP SECURITY
FOR MACHINE



SMS ALERT
FOR RESULT



USB
CONNECTIVITY



RATE CHART
FECILITY



REPORT
GENERATION



INBUILT THERMAL
PRINTER



INBUILT STIRRER
MODELS

Measuring Parameters: 1. Fat, 2. SNF, 3. CLR, 4. Protein, 5. Lactose,
6. Added Salt, 7. Added Water, 8. Temperature

Accuracy		Measuring Range	
Fat	: $\pm 0.1\%$	Fat	: 0.5% to 12%, 12% to 15%
SNF	: $\pm 0.15\%$	SNF	: 6% to 15%
CLR	: ± 1	CLR	: 15 to 40
Water	: $\pm 5\%$	Water	: 0% to 99%
Temperature	: $\pm 1^\circ\text{C}$	Temperature	: 1°C to 40°C

- ✿ Analyzer+Wifi/4G+Printer+stirrer
- ✿ ABS & SS body option available
- ✿ Easy correction feature available
- ✿ Excellent repeatability for all parameters
- ✿ High accuracy even for high fat milk
- ✿ Option for ID and Weight entry
- ✿ Rate chart can be created manually and through USB



SCAN TO
CONNECT US

Poornasree[®]
EQUIPMENTS

Manufacturer of Milk Testing Equipments

MADE
IN INDIA
PROUD TO BE
AN INDIAN

www.poornasree.com

THE NEW ADVANCED

LactoSure[®] Eco-CP

**3RD
GENERATION**

THE FASTEST ULTRASONIC MILK ANALYZER

WITH MASTITIS SYMPTOM DETECTION & pH MEASURING

**RESULT IN
25SEC**



***RATE CHART SUPPORT**



**POWERED WITH NEW ADVANCED
32-BIT DUAL CORE MICROCONTROLLER**



***INTERNAL MEMORY UPTO
1000 TEST FOR FIELD COLLECTION**



***FIELD COLLECTION DATA
DOWNLOAD FACILITY
TO COMPUTER**



***USB CONNECTIVITY FOR
KEYBOARD/FLASH DRIVE/SERIAL DATA**



***OPTION TO STORE
CUSTOMER ID & QUANTITY**



**MASTITIS & pH
MEASURING**



***SUPER SILENT
MOTOR TECHNOLOGY**



***LIGHT WEIGHT & COMPACT BODY
WITH SPLASH &
SHOCK PROOF DESIGN**



BLUETOOTH



WIFI



USB

OPTIONAL CONNECTIVITY

Measuring Parameters: 1. Fat, 2. SNF, 3. CLR, 4. Protein, 5. Lactose, 6. Added Salt, 7. Added Water, 8. Temperature

Accuracy		Measuring Range	
Fat	: $\pm 0.1\%$	Fat	: 0.5% to 12%, 12% to 15%
SNF	: $\pm 0.15\%$	SNF	: 6% to 15%
CLR	: ± 1	CLR	: 15 to 40
Water	: $\pm 5\%$	Water	: 0% to 99%
Temperature	: $\pm 1^\circ\text{C}$	Temperature	: 1°C to 40°C

✧ LactoSure ECO CP – Ultrasonic Analyzer with conductivity and pH Measuring

✧ Easy correction feature available

✧ Excellent repeatability for all parameters

✧ High accuracy even for high fat milk

✧ Option for ID and Weight entry

✧ Rate chart can be created manually and through USB



**SCAN TO
CONNECT US**

Poornasree[®]
EQUIPMENTS

Manufacturer of Milk Testing Equipments

**MADE
IN INDIA**
**PROUD TO BE
AN INDIAN**

www.poornasree.com



- ★ Ideal for Indian Conditions.
- ★ Adjustable frequency and vibration time.
- ★ Power ON and active indication.
- ★ Splash proof cabinet design. (Water or milk if spilled over the body, will not penetrate inside the cabinet. This keeps the electronic and its sensitive components safe and intact.)
- ★ Cabinet made out of mild steel and powder coated to prevent from corrosion.
- ★ Vibration gun made with mild steel and chromium plate to Prevent from corrosion.



- ★ Table top model.
- ★ In built key board and thermal printer for easy operation & data capture. also, provision for external key board.
- ★ Auto TARE (ZERO) & Manual facility after report printing and data storage
- ★ More than 5 year data storage capacity.
- ★ Facility for duplicate print out and SMS alert option.
- ★ High contrast blue back light 128x64 graphical display.
- ★ Can be interface to various types of weighing scales and milk analyzers.
- ★ RF Id based identification option.
- ★ Data import and export facility
- ★ Password protected.
- ★ GSM/GPRS Connectivity



Poornasree Equipments



poornasree_equipments_



Poornasree Equipments



POORNASREE EQUIPMENTS
LACTOSURE BRAND



POORNASREE EQUIPMENTS



SCAN TO
CONNECT US

Poornasree
EQUIPMENTS

Manufacturer of Milk Testing Equipments

MADE
IN INDIA
PROUD TO BE
AN INDIAN

www.poornasree.com